

# The right Scaffolding System for your industry

Layher® 

More Possibilities. The Scaffolding System.



# THE LAYHER ADVANTAGE

Our End-to-End Proven Methodology for Successful Partnerships & Projects



## Established, Trusted Brand in the Industry

For Layher Nigeria, local content means:

- Creating qualified employment;
- Developing local skills and capacity;
- Transferring know-how;
- Collaborating with subcontractors;
- And enhancing local entrepreneurship.

Layher goal is to promote a new safety and risk-management culture for works at height. As an OEM, our goal is to accompany and build partnerships with Nigerian scaffolding rental/erecting companies.

**More Possibilities — More Value Every Step Of The Way.**



## Partner with Layher

**Our Precision Scaffolding & Proven Methodology can be Your Innovation & Reputation**

We're more than just a manufacturer. We're your partner know-how & job site expertise.

## We Build Strong Relationships & Personal Connections

As a customer, you have a personal connection with every level of the Layher team, from the salesperson to the engineers to our support team members. Together, we've got you covered.





# 01

## DIGITAL DESIGN & ENGINEERING



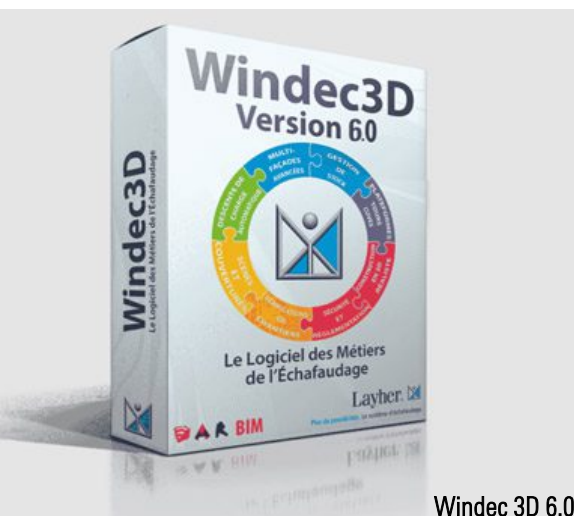
### Scaffold engineering, knowledge & know-how you can trust

#### Providing More Scaffold Solutions Equals Greater Opportunities & More Profitability

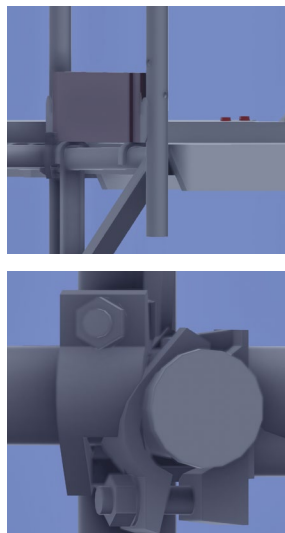
Whatever the challenge, Layher partners benefit from a comprehensive range of scaffolding systems solutions to handle every scaffolding task, no matter how unique or complex.

#### Our High-Quality 3D Designs Provide you with:

- ▶ 3D virtual reality tour of your projects scaffold system.
- ▶ A complete detailed construction plan.
- ▶ Detailed drawings for all trades to use or time efficiencies and planning materials list.
- ▶ Parts needed for scaffold system.



Windec 3D 6.0

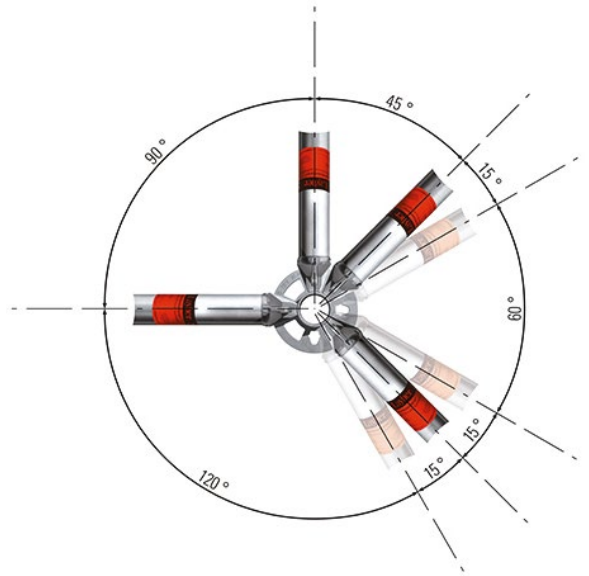


# 02 HIGHLY VERSATILE & QUALITY SCAFFOLDING

## UNSURPASSED QUALITY

**Our scaffold systems are known for their longevity, we take quality control very seriously, and this maximizes your investment.**

- ▶ Quality scaffolding in safety and speed of assembly is the greatest ROI on your investment.
- ▶ Our scaffolding systems are precision manufactured to the most exacting standards in the industry.
- ▶ We have the quality of our products certified, and they have all the necessary national approvals.
- ▶ We have the most comprehensive range of standard parts and thus create the basis for simple solutions and also produce parts for special solutions quickly and professionally.

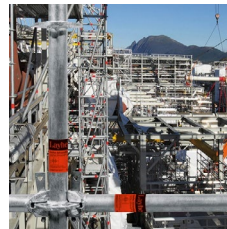


The result of **superior engineering**: up to 8 connections can be made in the structurally ideal Allround Connector, on one level and at various angles.



### Lighter Weights

Decrease worker fatigue over time—a vital consideration when maintaining crews over the course of 24-72 hours straight.

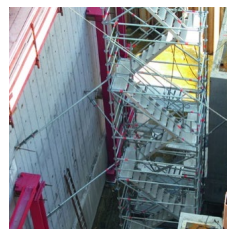


**Layher Allround® Scaffolding** is the industry standard for modular scaffolding, surpassing standard conventional and traditional construction methodologies.

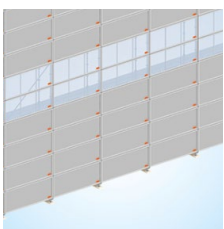


### Versatility

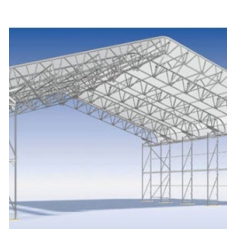
Versatility is synonymous with speed, providing the means to adapt to site conditions quickly while reducing change orders.



Layher offers a variety of **Access Systems** designed to optimize safety and productivity. Access to and from the scaffold is a key for safety, material and tool transport, as well as worker productivity.



With the **Protect System**, Layher can supply a cassette enclosure system meeting requirements relating to environmental protection and insulation from noise and weather.



### Roof Systems

With the Keder Roof XL, Layher is setting new standards for temporary roofing over industrial sites

**Increase productivity and maximize operations.**



# 03

## ON-SITE SUPPORT & TRAINING



**MORE VALUE**  
Every step of the way.



### On-Site Support Services

**Smart solutions and dedicated scaffold support — from start to finish.**

- ▶ Pre-planning and Optimization
- ▶ Digital Design and Engineering
- ▶ On-site Support and Training

What is critical for the success of any project is our support services:

Layher improves safety, productivity and profitability by ensuring that customers know how to assemble and disassemble products safely and efficiently.

Reduce your POB - Reduce your Shut Down Time



### Layher Training

**More knowledge: theoretical & practical training**

What is critical for the success of any project is our support services:

Skills development is the key to success, particularly in fiercely competitive markets. For this reason, Layher organizes regular training programs that prepare customers for current and future challenges in scaffolding, and that enable them to make the most of Layher products – for greater safety, efficiency and productivity.

# THE REAL COST OF SCAFFOLDING

Layher's superior scaffolding can save hundreds of operational hours on labor.

Operational decision made by management

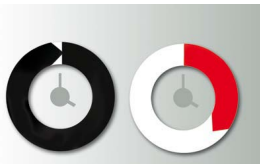
Incentivize productivity & shutdown reduction

Improved Overall Equipment Effectiveness



## Our Key Success Factors

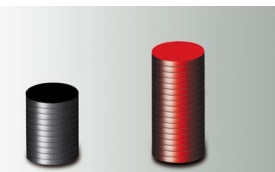
- ▶ Superior scaffolding saves plants money by increasing the speed of assembly and dismantling.
- ▶ Safety-inspired innovations include safety features that minimize risks that otherwise incur additional costs.
- ▶ Lighter weight scaffolding innovations that save you time and money.
- ▶ Scaffold components have 100% flexibility by unparalleled versatility.
- ▶ Partnership value – rapport, trust, expertise — it's a formula for success.
- ▶ Pre-planning and optimization services are what make scaffold smarter and more



64% savings in time



28% less weight



100% Flexibility

“ Our experts pointed out 10-15 things at the project site and within the customer's planning that must be appropriately addressed for a successful project. The customer said, 'we're glad that y'all brought all of this to the table because we didn't think about any of those points you raised in our planning.' ”

This project could have a multi-million dollar plant standstill (downtime), and our highly optimized scaffold systems reduce shutdown time. So, you could say that our scaffolding comes with expert services, and through time efficiencies and solutions to risk, our scaffolding products pay for themselves.

~ Harold Parker  
Corporate Trainer & Site Support Manager



# OUR INNOVATION TEAM & EXPERTISE IS ON YOUR TEAM

## Known For: Building Both Strong Scaffold Systems & Relationships

The Layher brand stands for quality that lasts — quality scaffold systems and quality partnerships. We deliver the Layher Advantage at every step of your project.

### Creating More Possibilities — More Success For Our Customers

**77**  
Years of  
Experience

**100%**  
Fit Accuracy

**19,000+**  
Miles of Steel Pipe  
Processed Yearly

**140**  
Worldwide  
Locations

## Offering

### More Speed

- ▶ Fast Assembly & Dismantling
- ▶ Layher Lightweight Advantage
- ▶ 100% Connection Accuracy
- ▶ Superior System Technology

### More Safety

- ▶ Maximum Investment Security
- ▶ Latest Safety Standards
- ▶ Certified Quality
- ▶ Logical Components

### More Versatility

- ▶ 100% Flexibility by Unparalleled Versatility
- ▶ Over 4000 scaffold parts in stock
- ▶ Scaffold Innovation Leader
- ▶ Proven Industrial Scaffold Systems

### More Services & Support

- ▶ Start-to-Finish Services
- ▶ Pre-Planning & Optimization
- ▶ 3D Models & Engineering
- ▶ On-Site Support & Training
- ▶ ScaffoldTALK Community

### More Profitability

- ▶ Reduced Shutdown Times = More Profit
- ▶ Scaffold Systems that Last = Maximum Investment ROI
- ▶ Fastest Crew Assembly & Dismantling = More Profit
- ▶ Layher Brand as Your Reputation = More Profit

## Unsurpassed Quality that Lasts for Maximum Investment ROI



Layher Nigeria Scaffolding  
Tél. : +234 (0)706 637 3228  
Maxime Lacour  
contact@layher.ng  
Victoria Island, Lagos  
www.layher.ng

